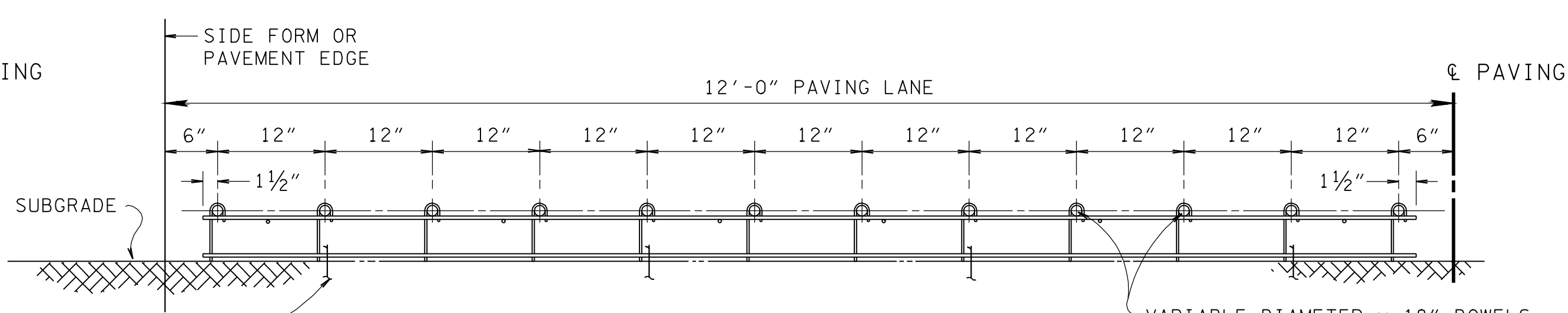
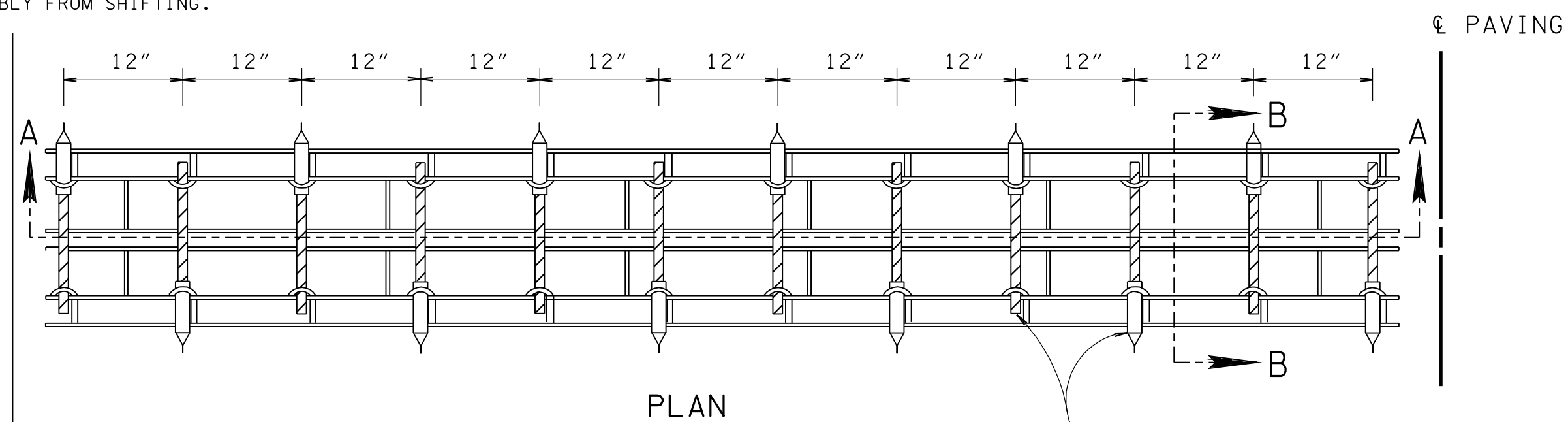


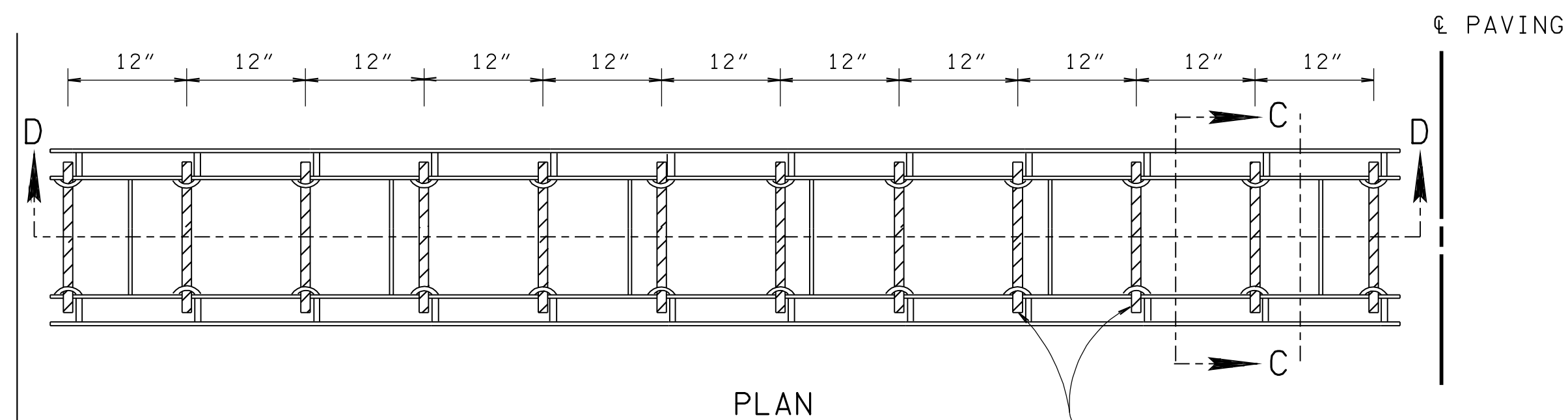
SECTION A-A
(EXPANSION TYPE)



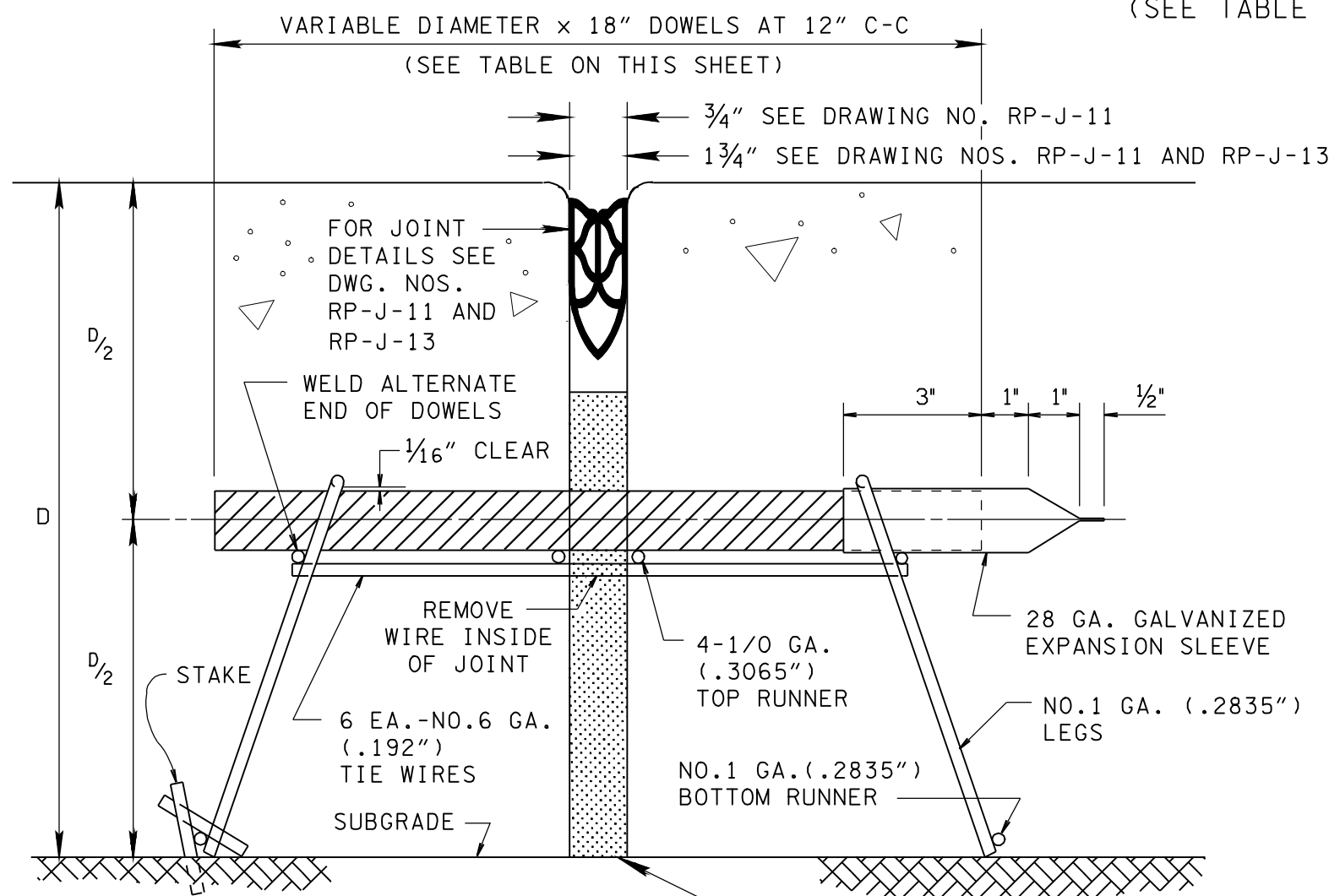
SECTION D-D
(CONTRACTION TYPE)



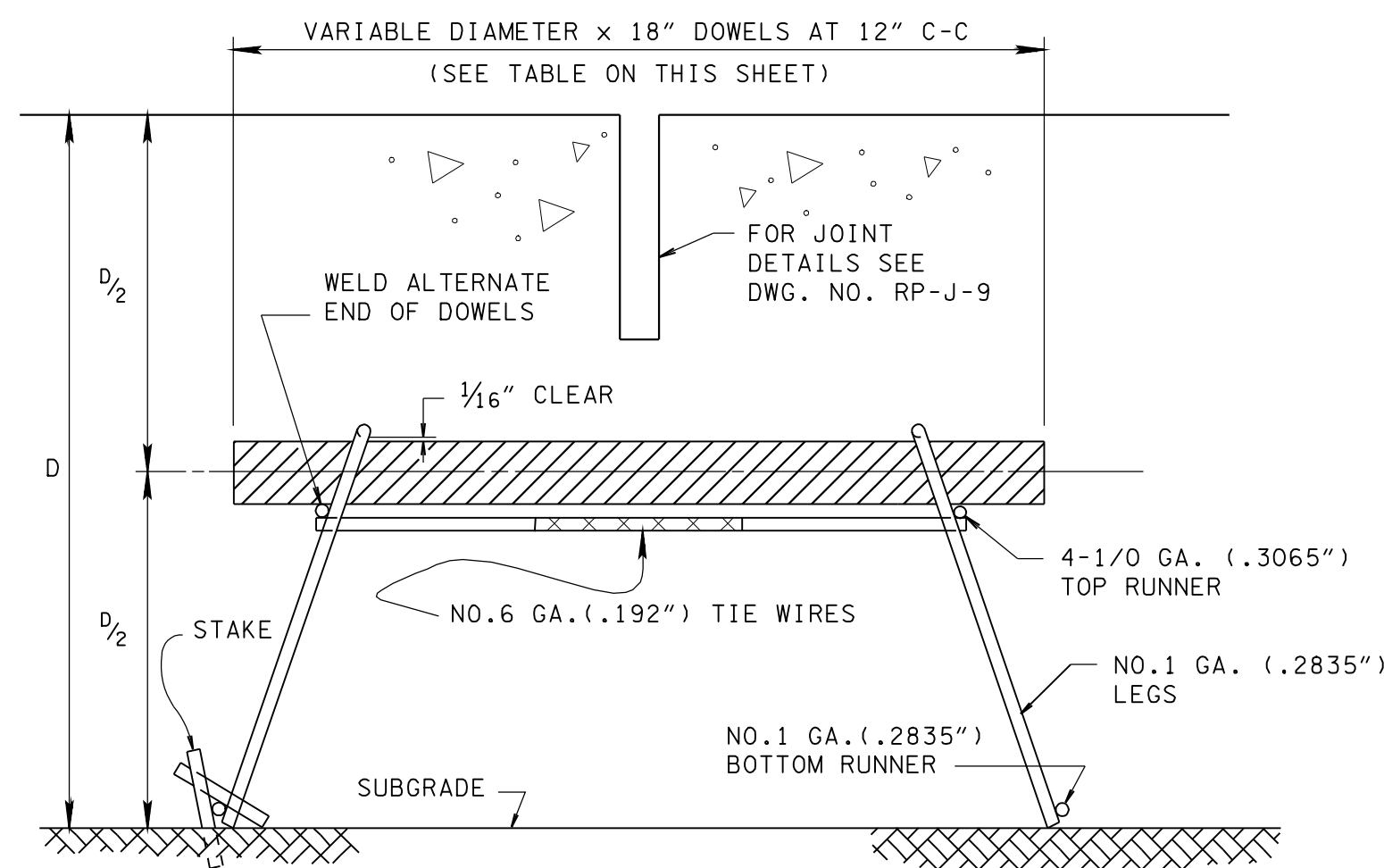
PLAN



PLAN

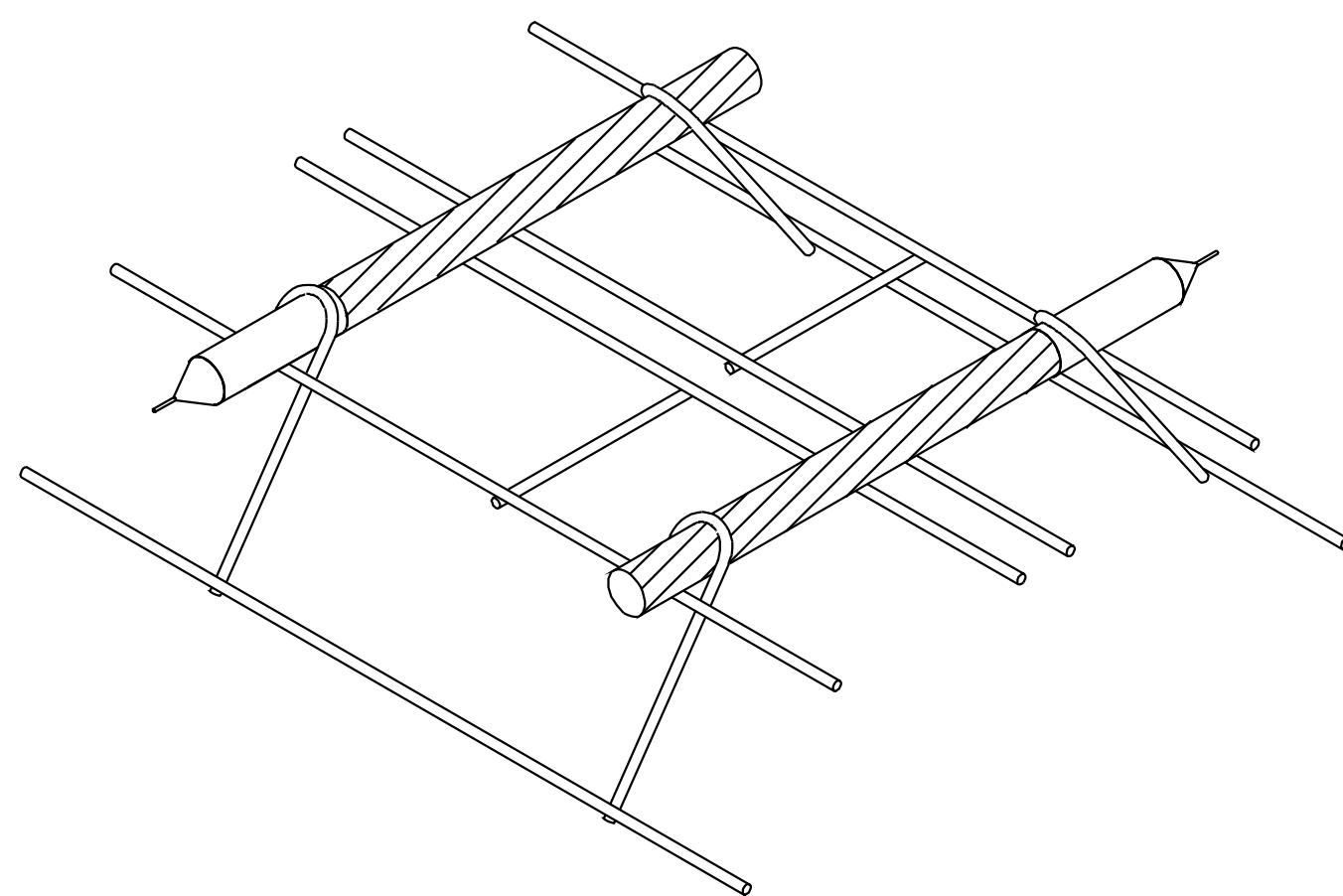


SECTION B-B
(EXPANSION TYPE)

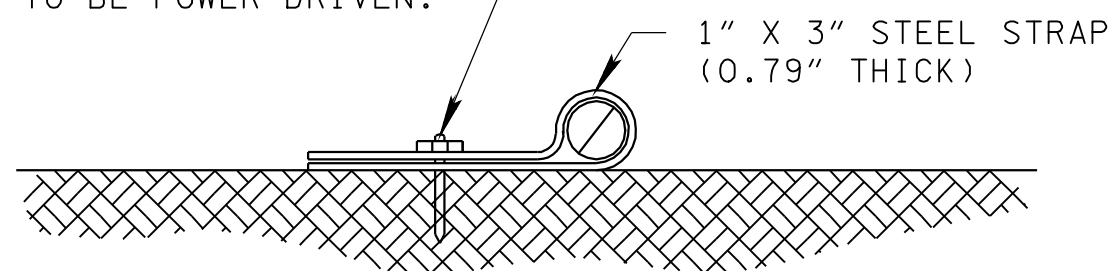


SECTION C-C
(CONTRACTION TYPE)

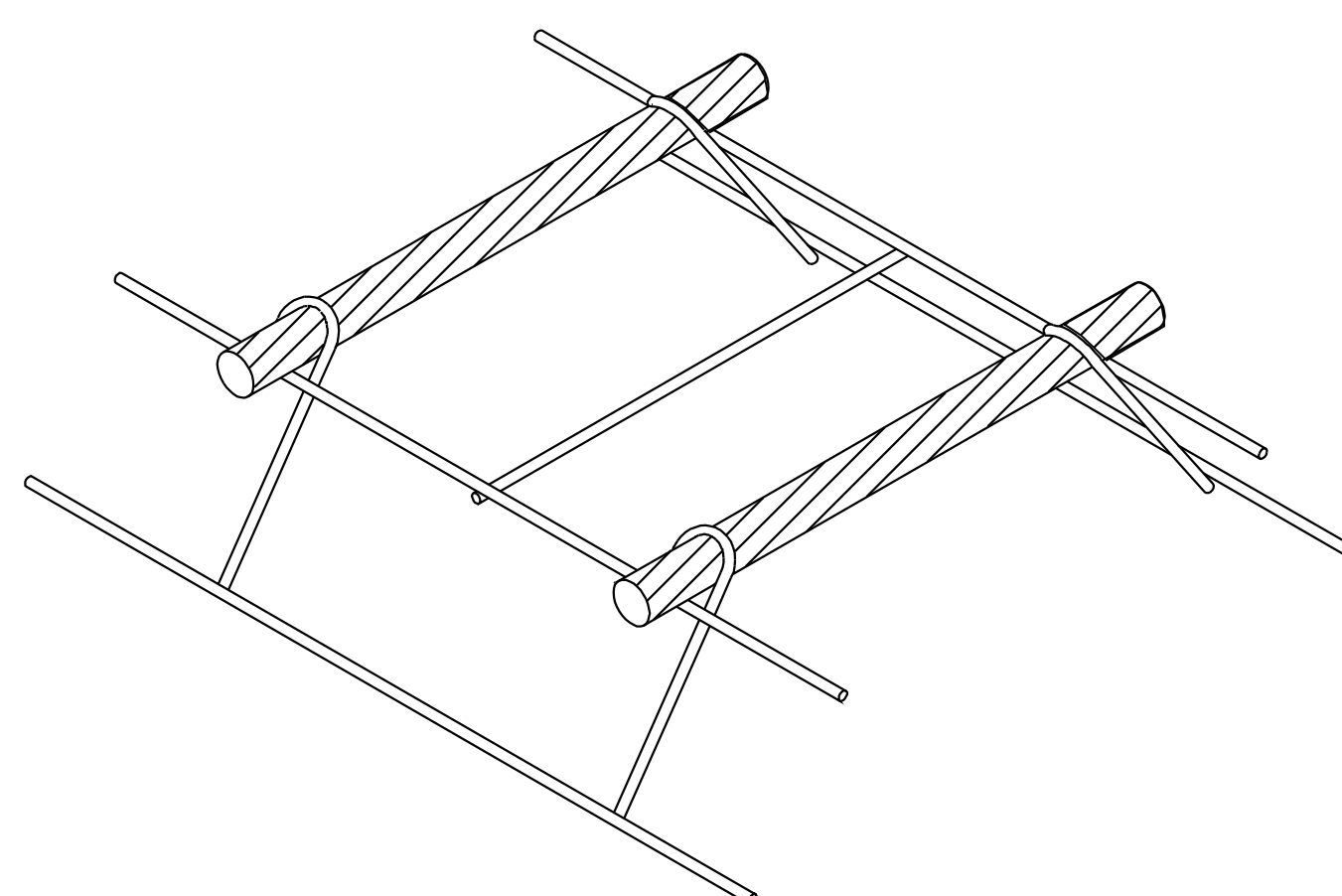
- GENERAL NOTES
- (A) DOWEL ASSEMBLY DEVICES OTHER THAN SHOWN ON DRAWING NOS. RP-J-17, RP-J-18 AND RP-J-19 MAY BE USED FOR SUPPORTING DOWELS AT EXPANSION AND CONTRACTION JOINTS.
 - (B) DOWEL ASSEMBLY DEVICES SHALL BE SO CONSTRUCTED AS TO HOLD THE DOWEL BARS FIRMLY IN POSITION PARALLEL TO THE SURFACE AND CENTERLINE OF THE PAVEMENT SLAB DURING THE PLACING OF CONCRETE.
 - (C) DOWEL ASSEMBLY DEVICES SHALL BE OF SUCH DESIGN AS TO PERMIT UNRESTRICTED MOVEMENT OF THE PAVEMENT SLAB.
 - (D) DOWEL ASSEMBLY DEVICES TO BE USED MUST BE APPROVED BY THE ENGINEER PRIOR TO THEIR USE.
 - (E) SEE STANDARD SPECIFICATIONS FOR ROAD AND BRIDGE CONSTRUCTION, SECTION 501-PORTLAND CEMENT CONCRETE PAVEMENT FOR DOWEL ASSEMBLY DEVICES. ALSO SEE APPLICABLE SPECIAL PROVISIONS.
 - (F) DOWEL ASSEMBLY DEVICES ARE TO BE FURNISHED IN SECTIONS WITH SUITABLE LENGTHS FOR VARIOUS WIDTHS OF PAVEMENT.
 - (G) ONE OF THE ALTERNATE DOWEL ASSEMBLY DEVICES WILL BE REQUIRED AT EACH EXPANSION JOINT WITH LOAD TRANSFERS, UNLESS A BULKHEAD IS USED. SEE DRAWING NOS. RP-J-17, RP-J-18
 - (H) SEE DRAWING NOS. RP-J-9 AND RP-J-11 FOR ADDITIONAL INFORMATION NOT SHOWN ON THIS SHEET.



EXPANSION JOINT



STRAP DETAIL



CONTRACTION JOINT

DOWEL BAR SIZE TABLE	
PAVEMENT THICKNESS (INCHES)	BAR DIAMETER (INCHES)
8-10	1 1/4"
>10	1 1/2"

CROSS-REFERENCE DRAWING FOR THIS SHEET: RP-J-9, RP-J-11, RP-J-13, RP-J-17 AND RP-J-19.

MINOR REVISION -- FHWA APPROVAL NOT REQUIRED.

STATE OF TENNESSEE
DEPARTMENT OF TRANSPORTATION

DOWEL
ASSEMBLY
DEVICES